



Cable ID: UTP6-0.575CCA

Test Limit: TIA Cat 6 Channel

Limits Version: V7.6

Date / Time: 08/05/2022 11:16:40 AM

Operator: □□□□□

Headroom 7.4 dB (NEXT 1,2-3,6)

Cable Type: Cat 6 U/UTP

NVP: 69.0%

Main: Versiv

S/N: 2104057

Software Version: V6.6 Build 2

Calibration Date: 08/04/2021

Adapter: DSX-8000 (DSX-CHA804)

S/N: 21161576

Test Summary: PASS

Remote: Versiv

S/N: 2104016

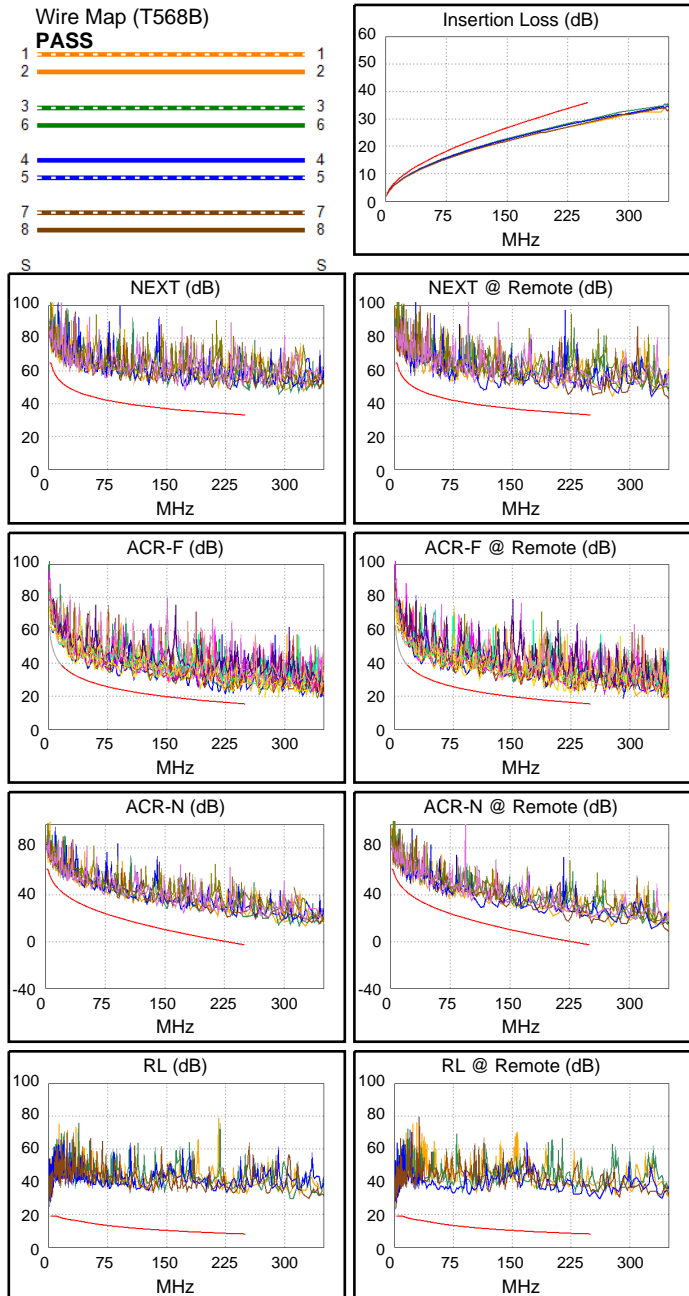
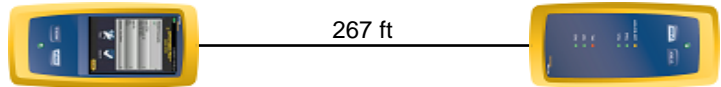
Software Version: V6.6 Build 2

Calibration Date: 08/04/2021

Adapter: DSX-8000R (DSX-CHA804)

S/N: 21161607

Length (ft), Limit 328	[Pair 7,8]	267
Prop. Delay (ns), Limit 555	[Pair 3,6]	413
Delay Skew (ns), Limit 50	[Pair 3,6]	20
Resistance (ohms)	[Pair 3,6]	18.26
Insertion Loss Margin (dB)	[Pair 3,6]	5.9
Frequency (MHz)	[Pair 3,6]	250.0
Limit (dB)	[Pair 3,6]	35.9



Worst Case Margin Worst Case Value

PASS	MAIN	SR	MAIN	SR
Worst Pair	1,2-3,6	1,2-3,6	3,6-4,5	3,6-4,5
NEXT (dB)	8.3	7.4	14.6	10.2
Freq. (MHz)	3.0	2.9	230.0	222.5
Limit (dB)	65.0	65.0	33.7	34.0
Worst Pair	3,6	3,6	4,5	4,5
PS NEXT (dB)	9.4	8.1	15.3	12.8
Freq. (MHz)	3.1	3.1	229.5	223.0
Limit (dB)	62.0	62.0	30.8	31.0

PASS	MAIN	SR	MAIN	SR
Worst Pair	1,2-7,8	7,8-1,2	1,2-7,8	7,8-1,2
ACR-F (dB)	5.3	5.4	5.3	5.9
Freq. (MHz)	217.0	217.5	217.0	234.5
Limit (dB)	16.5	16.5	16.5	15.9
Worst Pair	4,5	1,2	4,5	1,2
PS ACR-F (dB)	7.1	6.3	7.1	6.3
Freq. (MHz)	231.0	217.5	231.0	217.5
Limit (dB)	13.0	13.5	13.0	13.5

N/A	MAIN	SR	MAIN	SR
Worst Pair	1,2-3,6	1,2-3,6	3,6-4,5	3,6-4,5
ACR-N (dB)	8.7	7.8	20.6	16.2
Freq. (MHz)	3.0	2.9	230.0	222.5
Limit (dB)	61.5	61.6	-0.5	0.4
Worst Pair	3,6	3,6	4,5	3,6
PS ACR-N (dB)	9.8	8.5	23.4	18.7
Freq. (MHz)	3.1	3.1	247.5	222.5
Limit (dB)	58.4	58.4	-5.5	-2.5

PASS	MAIN	SR	MAIN	SR
Worst Pair	4,5	4,5	4,5	4,5
RL (dB)	11.9	10.8	11.9	10.8
Freq. (MHz)	2.9	2.9	2.9	2.9
Limit (dB)	19.0	19.0	19.0	19.0

Compliant Network Standards:
 10BASE-T 100BASE-TX 100BASE-T4
 1000BASE-T 2.5GBASE-T 5GBASE-T
 ATM-25 ATM-51 ATM-155
 100VG-AnyLan TR-4 TR-16 Active
 TR-16 Passive